

## Han B Base Surface LC 2 Levers 2 Entries

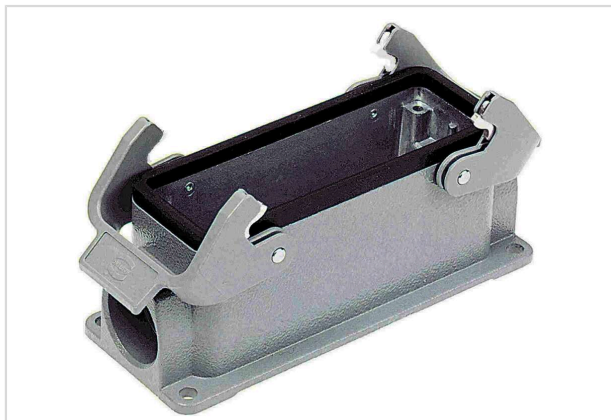


Image is for illustration purposes only. Please refer to product description.

|                    |   |
|--------------------|---|
| Part number        | 09 30 024 1270  |
| Specification      | Han B Base Surface LC 2 Levers 2 Entries  |
| HARTING eCatalogue | <a href="https://b2b.harting.com/09300241270">https://b2b.harting.com/09300241270</a> |

### Identification

|                          |                         |
|--------------------------|-------------------------|
| Category                 | Hoods/Housings          |
| Series of hoods/housings | Han <sup>®</sup> B      |
| Type of hood/housing     | Surface mounted housing |
| Type                     | Low construction        |

### Version

|                            |   |
|----------------------------|---|
| Size                       | 24 B  |
| Version                    | Side entry  |
| Cable entry                | 2x Pg 21  |
| Locking type               | Double locking lever                              |
| Han-Easy Lock <sup>®</sup> | Yes   |
| Field of application       | Standard hoods/housings for industrial connectors |

### Technical characteristics

|  |  |
|--|--|
| Limiting temperature                   | -40 ... +125 °C                                |
| Note on the limiting temperature       | For use as a connector according to IEC 61984. |
| Degree of protection acc. to IEC 60529 | IP65   |
| Type rating acc. to UL 50 / UL 50E     | 4<br>4X<br>12                                  |

### Material properties

|                         |                    |
|-------------------------|--------------------|
| Material (hood/housing) | Aluminium die-cast |
|-------------------------|--------------------|



**Pushing Performance**  
Since 1945

## Material properties

|  |   |
|--|---|
| Surface (hood/housing)                                     | Powder-coated   |
| Colour (hood/housing)                                      | RAL 7037 (dust grey)  |
| Material (seal)  | NBR   |
| Material (locking)   | Polycarbonate (PC)<br>Stainless steel   |
| Colour (locking)   | RAL 7037 (dust grey)  |
| Material flammability class acc. to UL 94 (locking levers) | V-0   |
| RoHS   | compliant   |
| ELV status   | compliant   |
| China RoHS   | e   |
| REACH Annex XVII substances                                | Not contained   |
| REACH ANNEX XIV substances                                 | Not contained   |
| REACH SVHC substances                                      | Yes   |
| REACH SVHC substances                                      | 6,6'-di-tert-butyl-2,2'-methylenedi-p-cresol<br>Potassium 1,1,2,2,3,3,4,4,4-nonafluorobutane-1-sulphonate |
| ECHA SCIP number   | 16ca3004-52e6-46fa-bf13-9c1e1b30f813  |
| California Proposition 65 substances                       | Yes   |
| California Proposition 65 substances                       | Nickel<br>Naphthalene   |
| Fire protection on railway vehicles                        | EN 45545-2 (2020-08)  |
| Requirement set with Hazard Levels                         | R22 (HL 1-3)<br>R23 (HL 1-3)  |

## Specifications and approvals

|           |  |
|-----------|--|
| UL / CSA  | UL 1977 ECBT2.E235076<br>CSA-C22.2 No. 182.3 ECBT8.E235076 |
| CE        | Yes  |
| Approvals | DNV GL   |

## Commercial data

|                                |               |
|--------------------------------|---------------|
| Packaging size                 | 1             |
| Net weight                     | 311.6 g       |
| Country of origin              | Germany       |
| European customs tariff number | 85389099      |
| GTIN                           | 5713140047570 |



**Pushing Performance**  
Since 1945

## Commercial data

eCl@ss

27440202 Shell for industrial connectors

---