

Han 6 HPR Base Panel Toggle locking

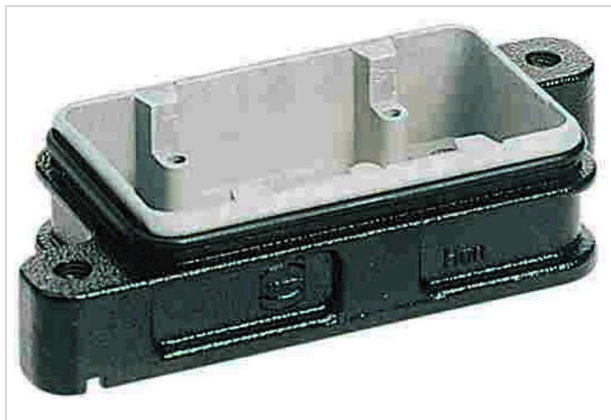


Image is for illustration purposes only. Please refer to product description.

Part number	09 40 006 0301
Specification	Han 6 HPR Base Panel Toggle locking
HARTING eCatalogue	https://b2b.harting.com/09400060301

Identification

Category	Hoods/Housings
Series of hoods/housings	Han® HPR
Type of hood/housing	Bulkhead mounted housing

Version

Size	6 B
Locking type	Toggle locking
Field of application	Hoods/housings for harsh outdoor environments

Technical characteristics

Limiting temperature	-40 ... +125 °C
Note on the limiting temperature	For use as a connector according to IEC 61984.
Degree of protection acc. to IEC 60529	IP65 IP68
Type rating acc. to UL 50 / UL 50E	4 4X 12

Material properties

Material (hood/housing)	Aluminium die-cast Corrosion resistant
Surface (hood/housing)	Powder-coated
Colour (hood/housing)	RAL 9005 (jet black)
Material (seal)	NBR



Pushing Performance
Since 1945

Material properties

RoHS	compliant
ELV status	compliant
China RoHS	e
REACH Annex XVII substances	Not contained
REACH ANNEX XIV substances	Not contained
REACH SVHC substances	Not contained
California Proposition 65 substances	Yes
California Proposition 65 substances	Naphthalene
Fire protection on railway vehicles	EN 45545-2 (2020-08)
Requirement set with Hazard Levels	R1 (HL 1-3) R7 (HL 1-3)

Specifications and approvals

Approvals	DNV GL
UL / CSA	UL 1977 ECBT2.E235076 CSA-C22.2 No. 182.3 ECBT8.E235076
CE	Yes

Commercial data

Packaging size	1
Net weight	148.6 g
Country of origin	Germany
European customs tariff number	85389099
GTIN	5713140057173
eCl@ss	27440202 Shell for industrial connectors