

Han 16HP-HSE-M25

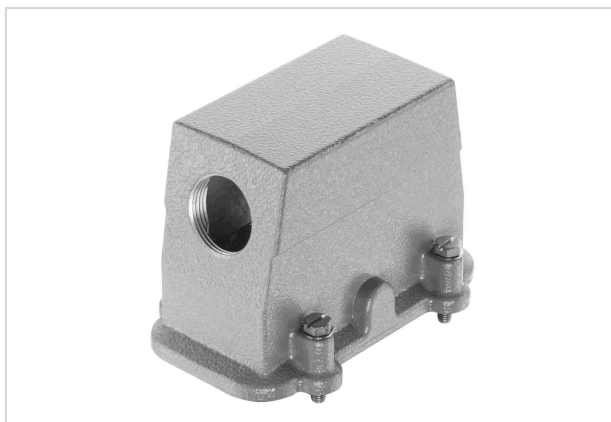


Image is for illustration purposes only. Please refer to product description.

Part number	19 39 016 0526
Specification	Han 16HP-HSE-M25
HARTING eCatalogue	https://b2b.harting.com/19390160526

Identification

Category	Hoods/Housings
Series of hoods/housings	Han® HP
Type of hood/housing	Hood

Version

Size	16 B
Version	Side entry
Cable entry	1x M25
Locking type	Screw locking
Field of application	Hoods/housings for rough environments

Technical characteristics

Tightening torque (screw locking)	3 Nm
Limiting temperature	-40 ... +125 °C
Note on the limiting temperature	For use as a connector according to IEC 61984.
Degree of protection acc. to IEC 60529	IP66 IP68 IP69 / IPX9K acc. to ISO 20653

Material properties

Material (hood/housing)	Aluminium die-cast
Surface (hood/housing)	Powder-coated
Colour (hood/housing)	RAL 7037 (dust grey)
Material (seal)	NBR



Pushing Performance
Since 1945

Material properties

Material (locking)	Stainless steel
RoHS	compliant
ELV status	compliant
China RoHS	e
REACH Annex XVII substances	Not contained
REACH ANNEX XIV substances	Not contained
REACH SVHC substances	Not contained
California Proposition 65 substances	Yes
California Proposition 65 substances	Nickel
Fire protection on railway vehicles	EN 45545-2 (2020-08)
Requirement set with Hazard Levels	R1 (HL 1-3) R7 (HL 1-3)

Specifications and approvals

Specifications	IEC 60664-1 IEC 61984
CE	Yes

Commercial data

Packaging size	1
Net weight	296 g
Country of origin	Germany
European customs tariff number	85389099
GTIN	5713140182196
eCl@ss	27440202 Shell for industrial connectors